

# Chester

MOBILE STORAGE



Chester is the personal storage solution designed for the way we truly work today. From laptops and gym bags to files and everyday essentials, Chester organizes everything in its place—without overwhelming your workspace footprint. Lift the top to discover a convenient landing pad for your devices and a spacious storage well perfect for backpacks, purses, or anything you bring to the office. Below, a dedicated file drawer and a concealed personal drawer keep papers, snacks, headphones, and all the small things that make your workday smoother. Now exclusively available in laminates with solid, pattern, and wood grains, Chester delivers a warmer, more refined, residential look to the workplace—perfect for modern office environments that value both function and elevated design.

# Chester

Mobile Storage



## FEATURES

- Includes black 37mm casters (2) locking and (2) non-locking
- A concealed top drawer is accessible when bottom drawer is open
- Full-depth rear storage well for bags and larger items
- Curved-profile hinged cushion includes gas-cylinder pneumatic guide, with easy-down mechanism
- Markerboard panel on underside of top
- A grommet is located in the top back of the cabinet

## LOCK SYSTEM

- Includes two UM series locks, keyed alike, black-faced, master-keyed, and core-removable (may be keyed-alike in the field)

## ORDERING TIPS

- Linear yardage required for COM fabric is 1 yard (20 units or fewer)
- Unless otherwise specified, the fabric grain on cushions will be applied "front-to-back"; the "front" is the side with drawers



## AVAILABLE LOCKS & FRONTS



UM Series  
(Standard)



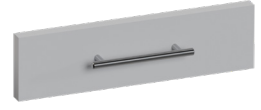
LL Series



K Series

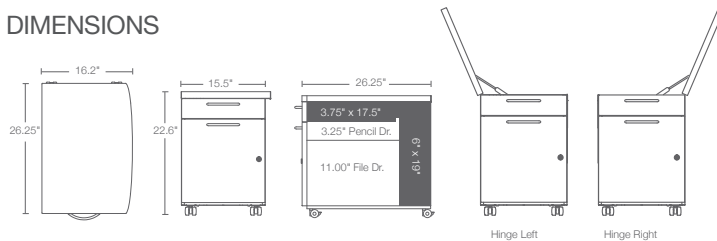


**S.** Satin Nickel Loop Pull  
(Add "B" suffix for black pull)



**Q.** Satin Nickel Bar Pull

## DIMENSIONS



## ORDERING GUIDE

### LAMINATE - HPL

H	D	W	Caster Style	Hinge Location	Pkg Wt	Pkg Cube	Part #	Lock	Front	Part #	Lam/Edge	Fabric	GR 1 Price	GR 2 Price	GR 3 Price	GR 4 Price	GR 5 Price	COM Price
22.6	26.25	16.2	black	left	68 lb	5.9 ft	WEGL	?	?	6565C	?	?	\$1,789	\$1,874	\$1,916	\$1,960	\$1,980	\$1,784
22.6	26.25	16.2	black	right	68 lb	5.9 ft	WEGR	?	?	6565C	?	?	\$1,789	\$1,874	\$1,916	\$1,960	\$1,980	\$1,784

### LAMINATE - TFL

H	D	W	Caster Style	Hinge Location	Pkg Wt	Pkg Cube	Part #	Lock	Front	Part #	Lam/Edge	Fabric	GR 1 Price	GR 2 Price	GR 3 Price	GR 4 Price	GR 5 Price	COM Price
22.6	26.25	16.2	black	left	68 lb	5.9 ft	WTFL	?	?	6565C	?	?	\$2,290	\$2,382	\$2,417	\$2,461	\$2,481	\$2,285
22.6	26.25	16.2	black	right	68 lb	5.9 ft	WTFR	?	?	6565C	?	?	\$2,290	\$2,382	\$2,417	\$2,461	\$2,481	\$2,285



888-712-8582 greatopenings.com

[CLICK HERE FOR FABRIC OPTIONS](#)



Choose from  
16 Standard  
Laminate Finishes