

TRACE

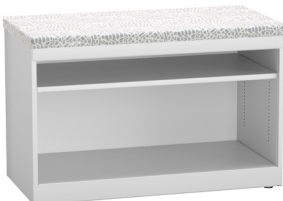
# Low Height Lateral File



Known for the efficient way they use space from side to side, laterals are an essential tool in office organization. Many companies need ways to store physical files and track of paper records. This classical design can be applied low profile, to keep space visually open, or up to five high, to provide high density filing and used as space definition.

TRACE

# Low Height Lateral File



## FEATURES

- Drawers include full-height side panels
- Two file bars are included on lower drawer for side-to-side filing
- Drawer bins will accommodate A4, Letter, and Legal size filing
- Open shelf lateral files do not need counterweight
- Cushion is 1-1/2" tall, an upholstered board factory-installed with screws
- 3/4 linear yard required for COM fabric (20 units or fewer)
- Unless otherwise specified, the fabric grain on all cushions will run "front-to-back"
- Open shelf unit allows for binder height storage on one shelf. Shelves adjust in 1/2" increments, and counterweight is not necessary

## OPTIONS AND ACCESSORIES

- Laminate drawer fronts may be specified
- Common laminate tops
- Polyethylene drawer front fillers increase sound absorption
- Individually locking drawers, either keyed or electronic
- File conversion bars for front-to-back filing
- Magnetic shelf dividers
- Magnetic label
- Magnetic drawer dividers for lateral box drawers

## LOCK SYSTEM

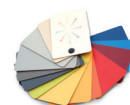
- Includes randomly-assigned UM Series locks - black-faced, master-keyed, and core-removable. Other key series are available, including bright nickel LL, and Knoll K
- Locking system captures drawer fronts on both sides
- May be ordered to include individually locking security drawers

## COUNTERWEIGHTS & INTERLOCK

- Trace box/file lateral files require counterweight unless they are ganged back-to-back with another lateral file or otherwise tethered to a permanent structure. Without counterweights, ganging box/file lateral files side-by-side will not ensure stability
- The safety interlock mechanism is integrated into the drawer slides, allowing only one drawer to open at a time
- Counterweights may be factory-installed or purchased separately to be installed in the field



888-712-8582 [greatopenings.com](http://greatopenings.com)



Any Color Available  
Over 72 Standard  
Metal Finishes

TRACE

# Low Height Lateral File

## AVAILABLE LOCKS & FRONTS

UM Series  
(Standard)

LL Series



SL Series



K Series



A. Full Pull

Q. Satin Nickel  
Bar PullS. Satin Nickel  
Loop Pull  
(Add "B" suffix  
for black pull)


## ORDERING GUIDE

H	D	W	Top	Cabinet Style	Pkg Wt	Pkg Cube	Part #	Front	Part #	Metal Color	Price
22-5/8	18-1/4	30	metal	box/file	97 lb	11.8 ft	RG	?	V3L7	?	\$1,262
22-5/8	18-1/4	36	metal	box/file	115 lb	14.0 ft	RG	?	V4L7	?	\$1,340
22-5/8	18-1/4	42	metal	box/file	135 lb	16.2 ft	RG	?	V5L7	?	\$1,463

H	D	W	Top	Cabinet Style	Pkg Wt	Pkg Cube	Part #	Metal Color	Price
22-5/8	18-1/4	30	metal	box/file OS lateral 1 adjustable shelf	54 lb	7.8 ft	ROS V3M9	?	\$1,004
22-5/8	18-1/4	36	metal		58 lb	8.1 ft	ROS V4M9	?	\$1,108
22-5/8	18-1/4	42	metal		62 lb	9.3 ft	ROS V5M9	?	\$1,206

H	D	W	Top	Cabinet Style	Wt	Cube	Part #	Front	Part #	Metal Color	Fab #	GR 1 Price	GR 2 Price	GR 3 Price	GR 4 Price	GR 5 Price	COM Price
23-1/2	18-1/4	30	1-1/2-h. cushion	box/ file	90 lb	7.8 fr	RG	?	V3L7C	?	?	\$1,608	\$1,730	\$1,780	\$1,828	\$1,867	\$1,603
23-1/2	18-1/4	36	1-1/2-h. cushion	box/ file	96 lb	8.1 ft	RG	?	V4L7C	?	?	\$1,706	\$1,828	\$1,878	\$1,925	\$1,965	\$1,701
23-1/2	18-1/4	42	1-1/2-h. cushion	box/ file	122 lb	9.3 ft	RG	?	V5L7C	?	?	\$1,865	\$1,987	\$2,036	\$2,085	\$2,124	\$1,859

H	D	W	Top	Cabinet Style	Wt	Cube	Part #	Metal Color	Fab #	GR 1 Price	GR 2 Price	GR 3 Price	GR 4 Price	GR 5 Price	COM Price
23-1/2	18-1/4	30	1-1/2-h. cushion	box/file OS lateral 1 adjustable shelf	57 lb	7.8 fr	ROS V3M9C	?	?	\$1,356	\$1,478	\$1,528	\$1,576	\$1,616	\$1,351
23-1/2	18-1/4	36	1-1/2-h. cushion		61 lb	8.1 ft	ROS V4M9C	?	?	\$1,478	\$1,601	\$1,650	\$1,698	\$1,738	\$1,473
23-1/2	18-1/4	42	1-1/2-h. cushion		65 lb	9.3 ft	ROS V5M9C	?	?	\$1,613	\$1,735	\$1,785	\$1,834	\$1,872	\$1,607

Available Fronts | A |  | Q | S |

888-712-8582 greatopenings.com

Any Color Available  
Over 72 Standard  
Metal Finishes