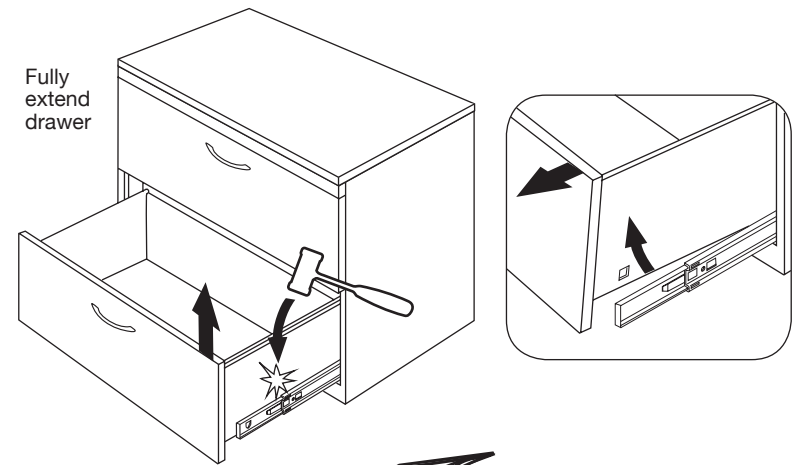


Drawer Removal

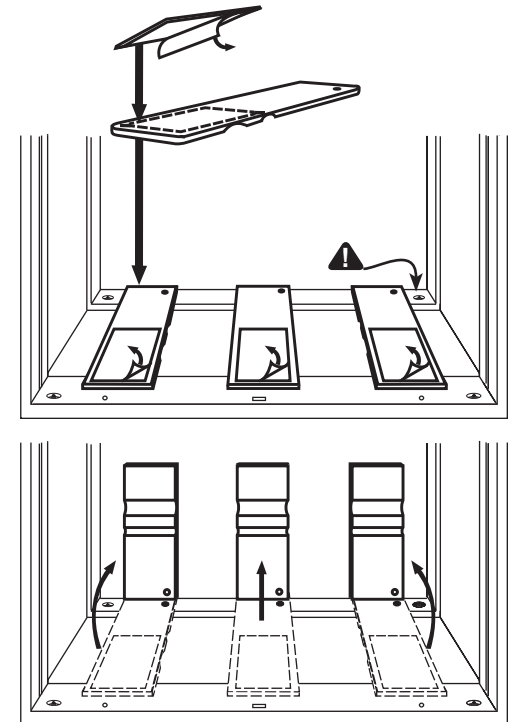
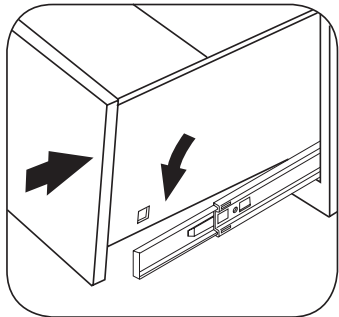
1. Fully extend drawer. While lifting on drawer front, tap down on slide using a non-marring hammer. When drawer is free from slide detent, rotate up and out.
2. Remove one side of adhesive backing and apply to flat side of counterweight opposite hole.
3. Place counterweight on bottom of cabinet with:
 - a) Slotted side down.
 - b) Counterweight hole flush to back of unit.
 - c) Locate inside of cabinet leveling glides holes.

WARNING: DO NOT cover Leveling Glide clearance holes.
4. Remove second side of adhesive backing. Double check position then rotate counterweight up and against back of cabinet.

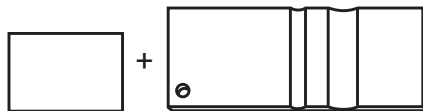


Drawer Installation

5. Starting with the lowest position, fully extend 1 set of slides. Position raised bin slots over slide tabs and press down until fully seated.



non-marring hammer



kit: tape and counterweight

1X - LTS4700, TRA6000, SME250019
 2X - LTS4600, TRA4600, SME240019
 3X - LTS4500, TRA4500, SME230018
 4X - LTS2300, TRA2300, SME22019