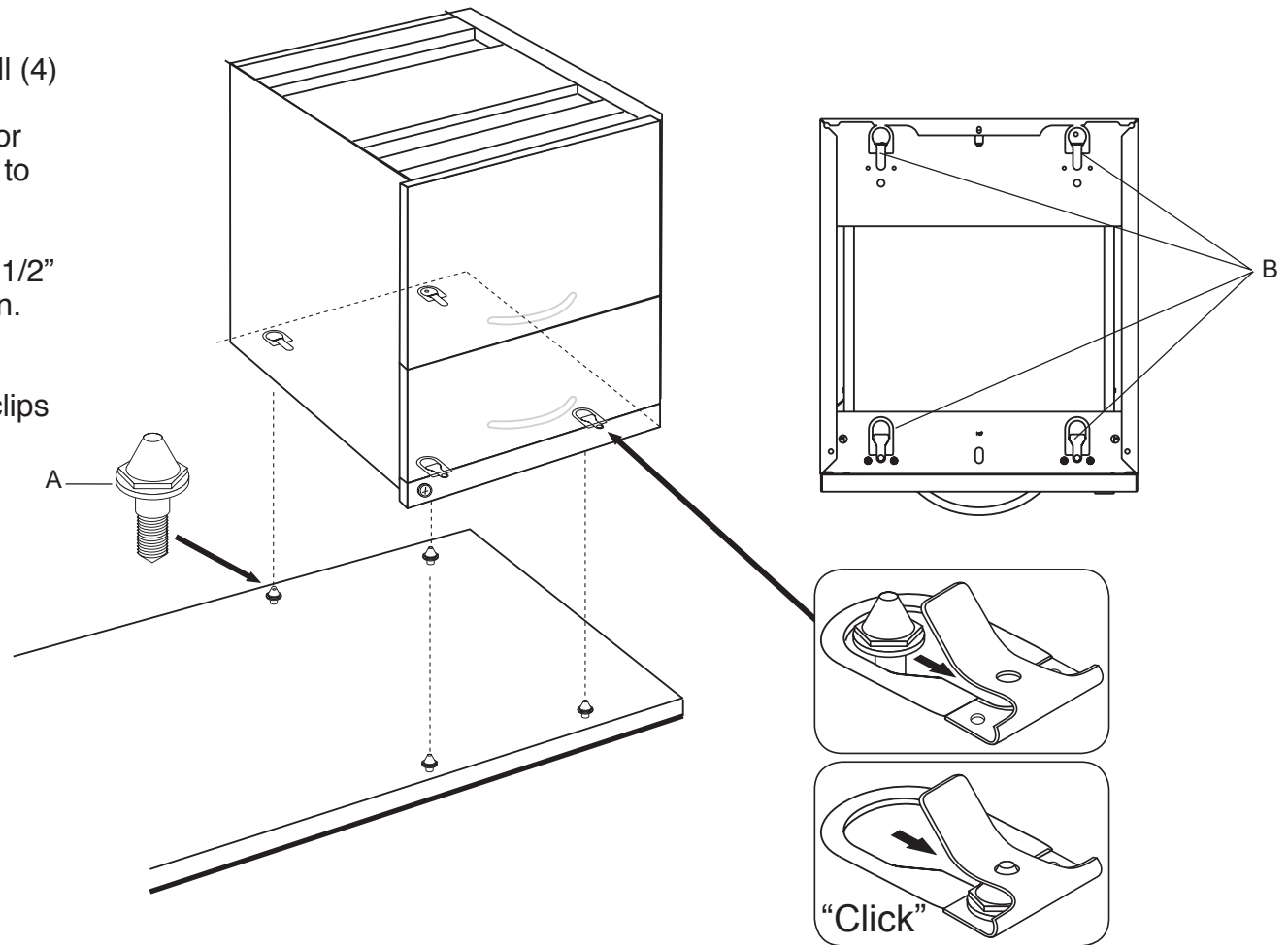


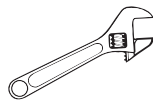
1. Place worksurface face down on floor.
2. Using provided template, mark and drill (4) 1/2" deep pilot holes using 11/64" drill.
Note: Mark depth on drill bit with tape or marker before drilling pilot holes so as to not drill thru worksurface.
3. Install quick-mount hanger screws (A) 1/2" into predrilled holes. Do not overtighten.
4. Position keyslots (B) in pedestal over hanger screw. Push back until spring clips lock in place.



power drill



11/64" drill bit



adjustable wrench



(4) quick mount hanger screws

