



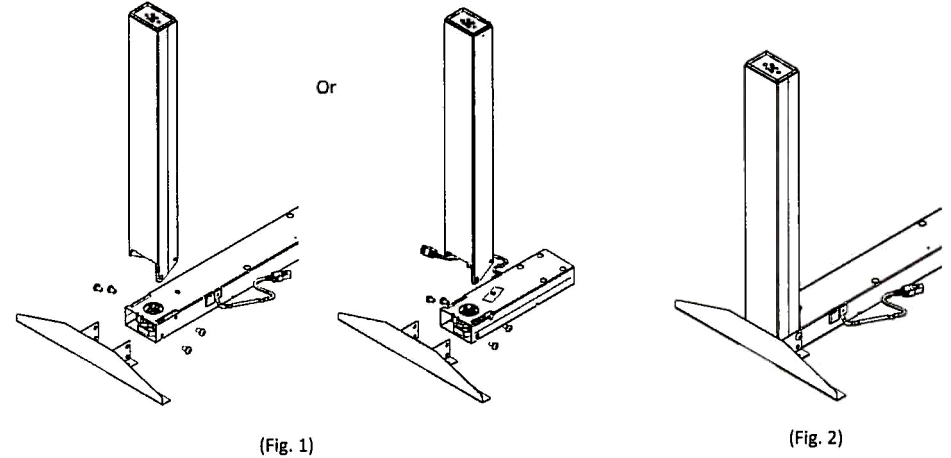
All electric motors MUST be initialized before moving the table in the "UP" direction.

Please follow the below instructions for proper initialization:

Initialize electric motors

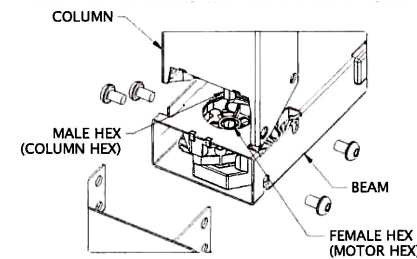
1. All Columns (motors) must be plugged into the Control box. Plug the "Up/Down" Hand switch in to the Control box. Plug the Control box power cord into a 110 volt grounded outlet. Hold the "Down" button in until the columns bottom out to the lowest position. Please continue to hold until a "clicking" sound is heard and the columns move "slightly" Up. Once this is completed your system is properly initialized and can be operated without harm to the system.

2. Insert Column into Cross Beam and slide Top Supports over the width of the Beam. (Fig. 1) Attach the Top Supports to the Clever Column using the M8x12mm Button Head Screws provided. Torque screws to 24 N m (18 ft lb). (Fig. 2)

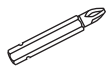


WARNING!

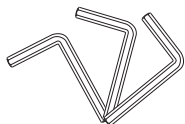
1. Very Important - To properly install the column into the beam, make sure that the hex shape adapter located on the end of the column is orientated to fit into the hex inlet located on the motor gear housing. Use a 9mm wrench to turn the hex adapter on the column to align with the hex in the motor. Failing to do so will damage the motor! (Do not try to turn the motor!)
2. Special care required - Slowly slide the column into the beam, pay attention to the fit between the column and motor as outlined in step 1.
3. Do not force the column into the beam. Doing so may result in damage to the motor
4. Make sure that the column legs are perpendicular (90 degree angle) before fully fastening the column and beam - failure to do so may result in undesired noise during use.



power drill



#2 Phillips



Set of Metric Allen Wrenches



(8) M8 x 12mm Button Head

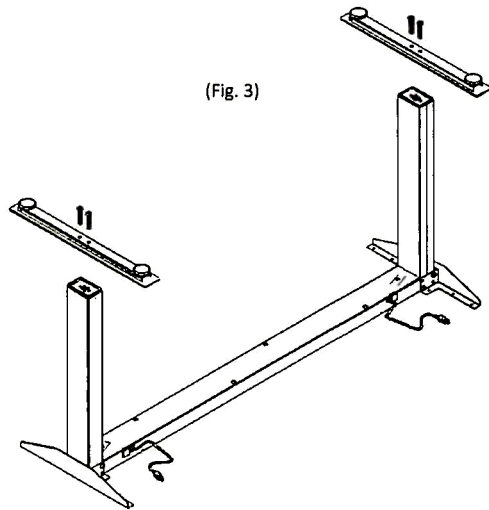


(4) M10 x 50mm Button Head



(20) #10 x 3/4" Wood Screw

3. Attach the Feet using the M10x50mm Button Head screws provided. (Fig. 3)



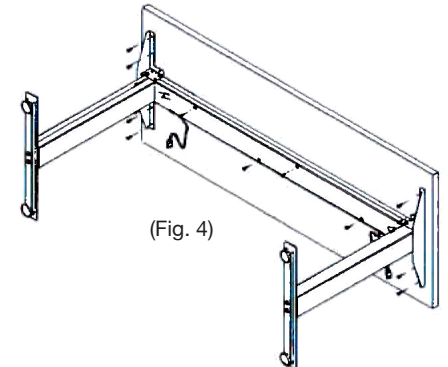
(Fig. 3)

4. After Step 3 is complete, flip the assembly right side up (in the operating position).

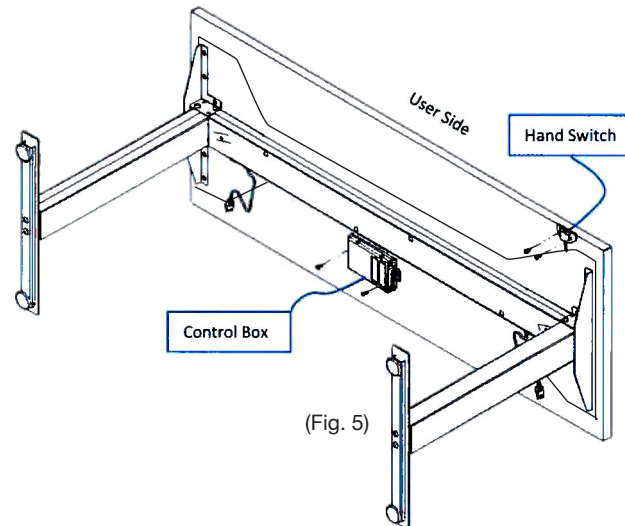
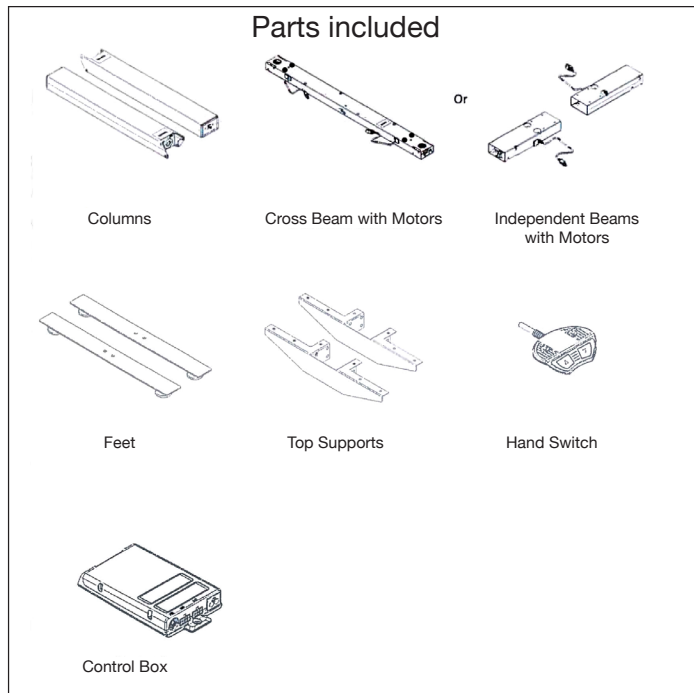
5. Attach Top Supports and Cross Beam to the table top with the #10 x 3/4" Wood Screws provided. (Fig. 4).

6. Attach Control Box and Hand Switch underneath the work surface. Center the control box on the opposite side of the user next to the Cross Beam. Install the Hand Switch where it will be convenient for the end user. (Fig. 5)

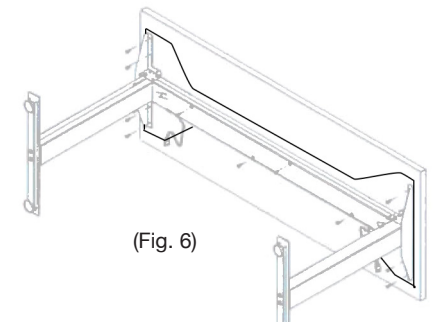
NOTE: Remember to reference the STOP sign page at the beginning for the proper start up procedure.



(Fig. 4)



(Fig. 5)



(Fig. 6)