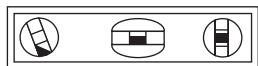
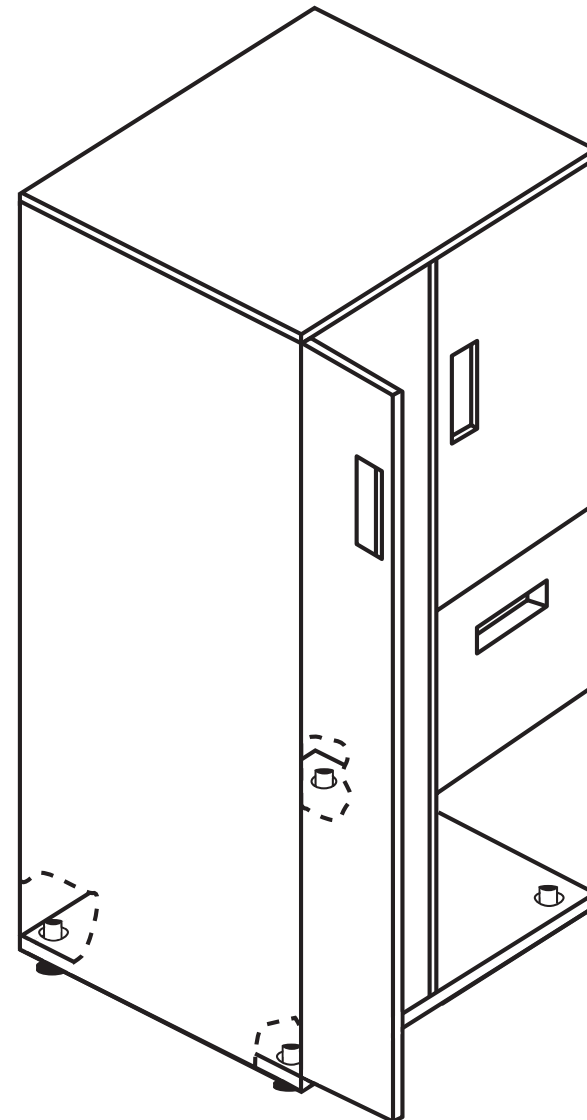
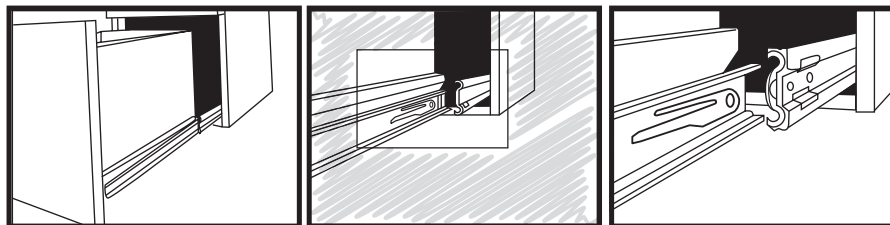
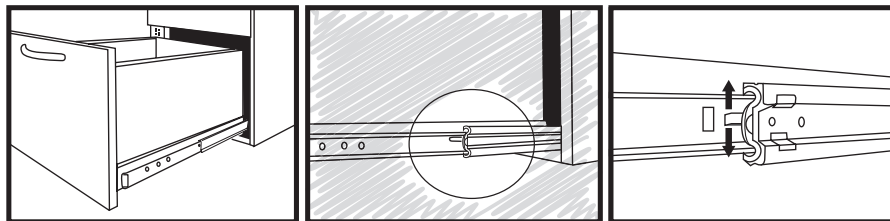
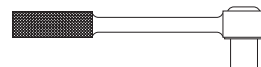


Level The Tower

1. Remove the bottom drawer as shown below and open the coat door to access the four leveling glides. Using a 1/4" ratchet wrench, turn each leveling glide clockwise to raise, and counter-clockwise to lower the glide.
2. Engage the disconnect lever on each slide by pressing down on one, up on the other. Pull the drawer directly outwards.
3. The slide member that's attached to the cabinet has a ball bearing carriage; position that carriage all the way forward (failure to do so can result in slide failure). Carefully position the drawer so that the outer and inner slide members are aligned. Gently push the drawer straight in, and cycle once to fully engage.



Level



1/4" Ratchet



T20 Torx

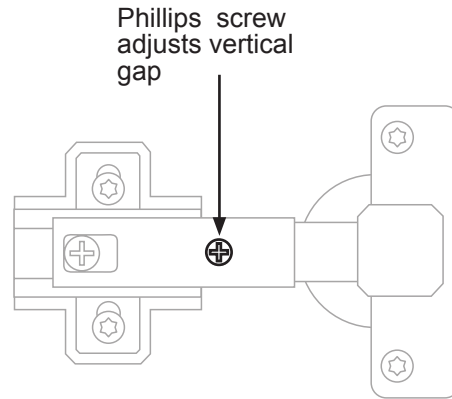
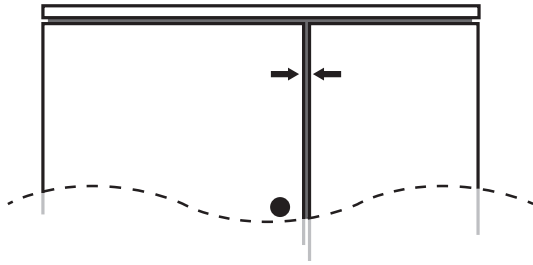


#2 Phillips

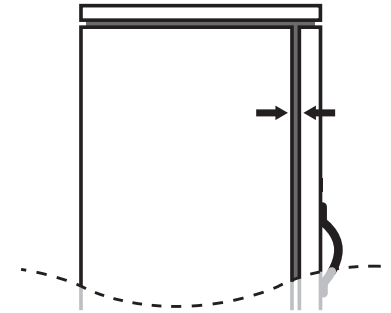
Adjust the Door Hinges

After leveling the cabinet, examine the gaps between the doors and the cabinet. If the gaps are uneven, the doors need to be adjusted.

1. **Vertical Gaps:** To improve the vertical gap, adjust the Phillips screw. Tightening the screw will pull the door toward the center of the cabinet. Loosening the screw will pull the door toward the outside edge.



3. **Side Gaps:** To improve the door gap at the side of the cabinet, loosen the side gap Phillips hinge screw and slide the hinge back to close the gap, or forward to increase the gap. Do not remove the screw. Tighten when finished.



2. **Horizontal Gaps:** To improve horizontal gap, loosen the Torx screws only enough to slide the hinges. Do not remove the screws completely. Carefully slide the doors up or down until the horizontal gap is uniform. When properly aligned, tighten the screws.

