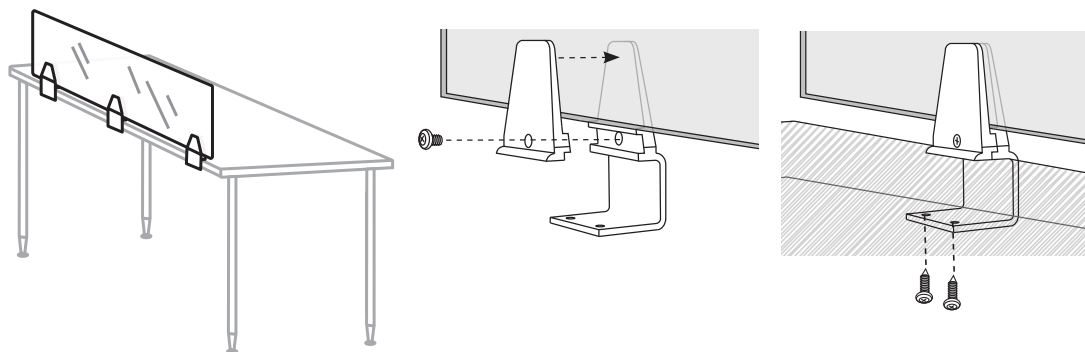


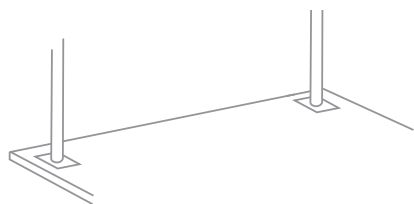
Acrylic Privacy Screen Installation

Screens 54" and smaller include two aluminum brackets
Screens 60" and wider include three aluminum brackets

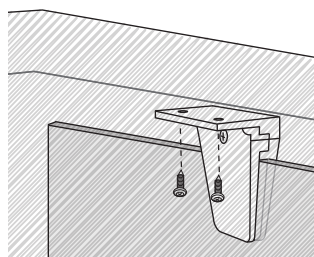
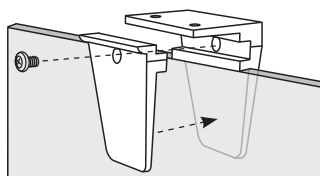
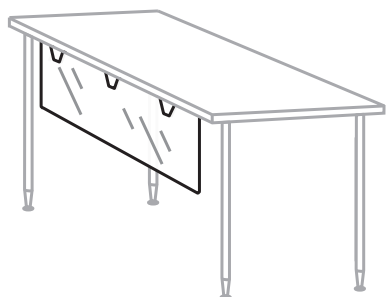


1. Attach aluminum clips to acrylic privacy screen allowing even space between each clip.
2. Center privacy screen on work surface.
3. Screw work surface screws from bottom to secure brackets. You can pre-drill with a 1/8" drill bit before you screw in work surface screws; be careful to not drill all the way through the work surface.

Acrylic Modesty Panel Installation



For easier installation,
flip work surface over first



1. Attach aluminum clips to acrylic privacy screen allowing even space in between each clip.
2. For easier installation, flip work surface over first on soft non-abrasive floor. Center privacy screen on work surface and screw in work surface screws. You can pre-drill with a 1/8" drill bit before you screw in work surface screws; be careful to not drill all the way through the work surface. Front of modesty panel should be flush with front of desk leg.



power drill



#2 Phillips



work surface screw



Phillips screw driver

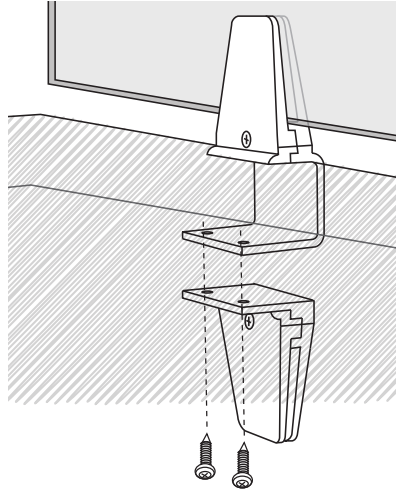
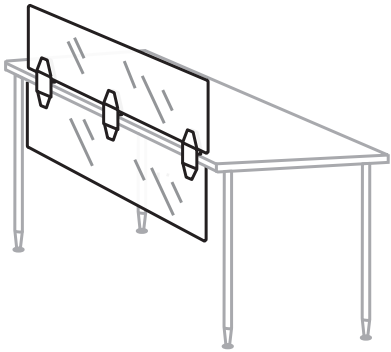


1/8" drill bit



#6-32 machine screw

ACRYLIC PRIVACY SCREEN and MODESTY PANEL INSTALLATION



1. Follow steps 1 and 2 on page 1 from Acrylic Privacy Screen Installation.
2. Line up aluminum modesty brackets underneath privacy screen brackets, screw into work surface using (2) work surface screws. You can pre-drill with a 1/8" drill bit before you screw in work surface screws; be careful to not drill all the way through the work surface.