

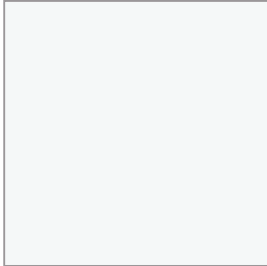


Laminates and Fabrics

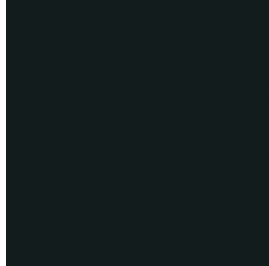


HIGH PRESSURE LAMINATES (HPL) AND EDGE TRIMS

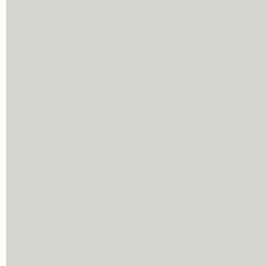
These 16 laminates with matching 3mm edge bands are appropriate for use on both work surface (horizontal) and door/drawer front (vertical) applications – all at standard price and lead-time. Look for additional easy-to-order Industry Favorites on our website, as well as our custom laminate program. Contact Wilsonart or Formica for samples.



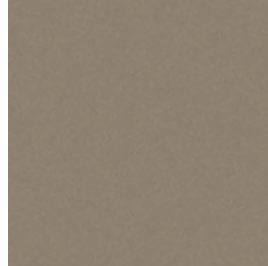
DWDW Designer White
(Wilsonart D354-60)



BKBK Black
(Wilsonart 1595-60)



FGFG Fashion Grey
(Wilsonart D381-60)



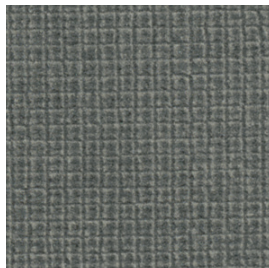
SGSG Shadow
(Wilsonart D96-60)



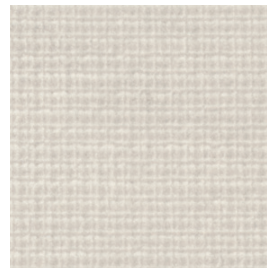
DMGH Slate Grey
(Wilsonart D91-60)



DZDZ Desert Zephyr
(Wilsonart 4841-60)



SLSL Steel Mesh
(Wilsonart 4879-38)



GYGY Grey Mesh
(Wilsonart 4877-38)



B4B4 Bleached Legno
(Formica 8845-58)



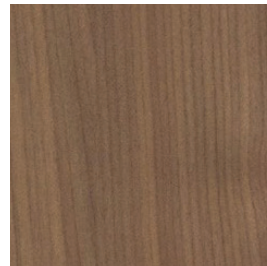
NNNN Neutral Twill
(Formica 8826-58)



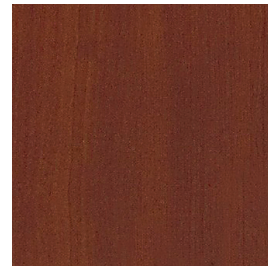
S8S8 Sarum Twill
(Formica 8827-58)



BGBG Brighton Walnut
(Wilsonart 7922K-07)



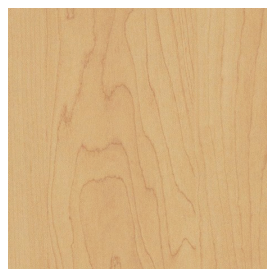
RHRH River Cherry
(Wilsonart 7937-38)



BCBC Biltmore Cherry
(Wilsonart 7924K-07)



WCWC Wild Cherry
(Wilsonart 7054-60)



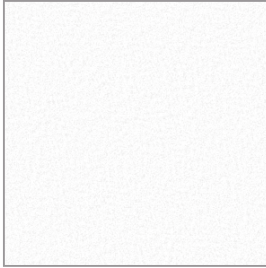
KMKM Kensington Maple
(Wilsonart 10776-60)



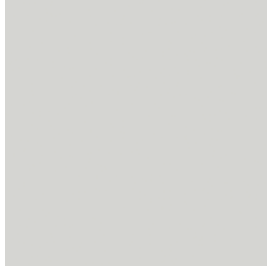
THERMAL FUSED LAMINATES (TFL) AND EDGE TRIMS

TFL is a cost effective, durable product used on vertical services such as drawer fronts and doors. TFL offers the same abrasion resistance as High Pressure Laminate and slightly less impact resistance.

Based on availability



M1573-60 Frosty White
(Wilsonart M1573-60)



M-FGFG Fashion Grey
(Wilsonart M-D381-60)



M-B4B4 Bleached Legno
(Formica M-8845)



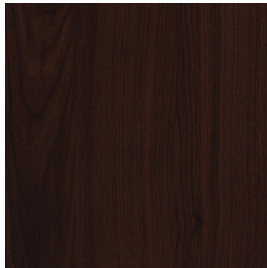
M-NNNN Neutral Twill
(Formica M-8826)



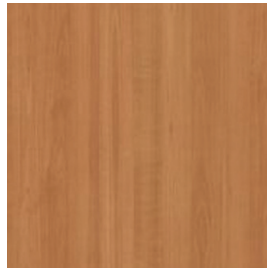
M-7739 Cocoa Maple
(Formica M-7739)



M-7747 Pencil Wood
(Formica M-7747)



M-6209 Prestige Walnut
(Formica M-6209)



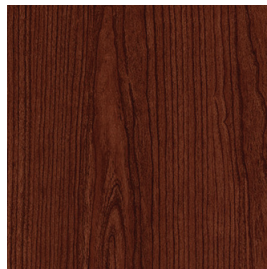
M-10745-60 Fonthill Pear
(Wilsonart M-10745-60)



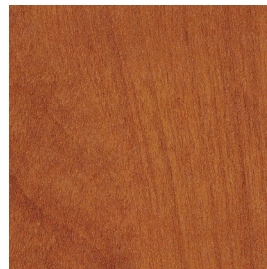
M-7909-60 Fusion Maple
(Wilsonart M-7909-60)



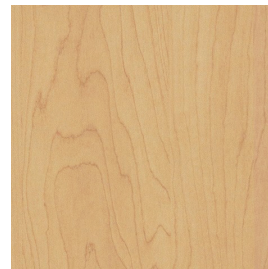
M-7925-38 Monticello Maple
(Wilsonart M-7925-38)



M-7759 Select Cherry
(Formica M-7759)



M-WCWC Wild Cherry
(Wilsonart M-7054-60)

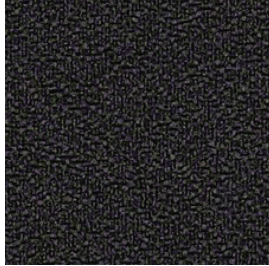


M-KMKM Kensington Maple
(Wilsonart M-10776-60)

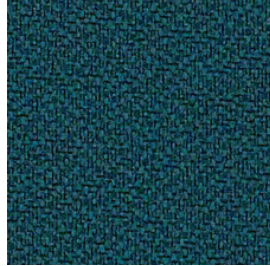


FABRICS

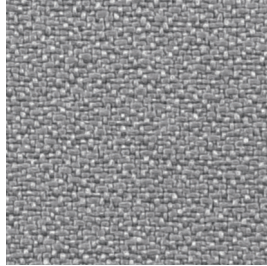
In addition to our graded fabric program, we offer these standard fabrics for ease of ordering. C.F. Stinson New Hempstead fabric is a low texture, 100% polyester that will work very well as seating upholstery or in vertical tack board applications. For memo samples, please see cfstinson.com.



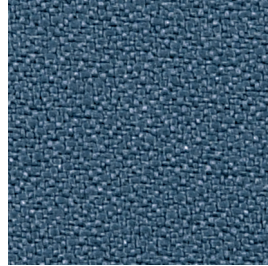
7A Black
(CF Stinson NH333)



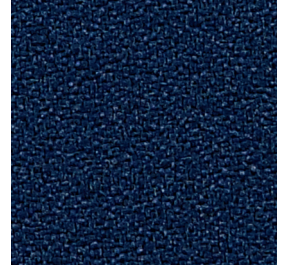
8Q Azure
(CF Stinson NH359)



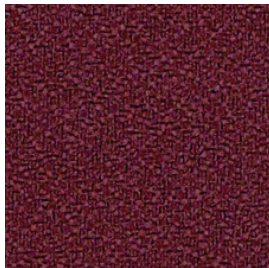
7C Nickel
(CF Stinson NH361)



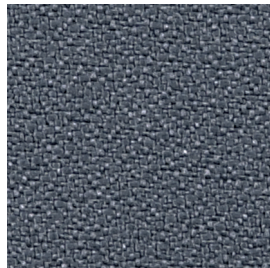
7J Steel
(CF Stinson NH366)



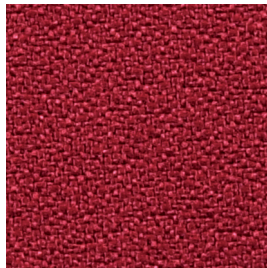
7K Navy
(CF Stinson NH369)



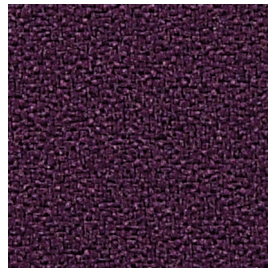
8R Red Red Wine
(CF Stinson NH389)



7B Grey
(CF Stinson NH395)



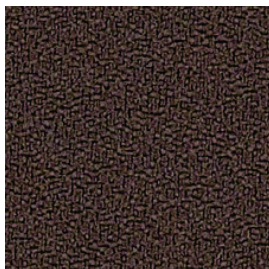
7G Fire
(CF Stinson NH406)



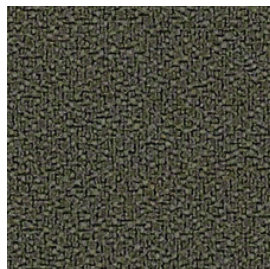
D1 Aubergine
(CF Stinson NH419)



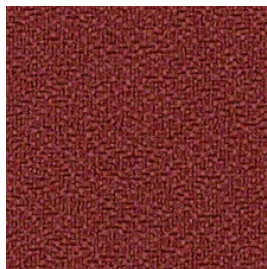
7D Jodhpurs
(CF Stinson NH420)



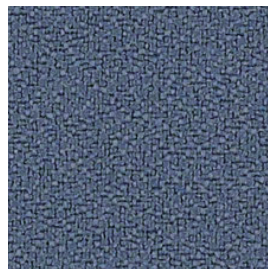
8M Cocoa
(CF Stinson NH424)



8P Zen
(CF Stinson NH425)



8S Brick
(CF Stinson NH434)



8L Galaxy
(CF Stinson NH509)

See our website for graded fabrics from CF Stinson and Maharam

<https://www.greatopenings.com/finish-center/fabrics/>

