

**TRACE** Overhead Cabinet & Shelf Frequently Asked Questions**Basic Construction:**

- All Great Openings products meet or exceed applicable ANSI-BIFMA standards for durability and safety
- A lifetime warranty ensures long-lasting performance and after-sale support
- Overhead cabinet end panels consist of 16 gauge steel
- Shelves and tops are 18 gauge steel
- Overhead cabinet doors are 20 gauge steel
- All overhead cabinets and shelves ship KD, to be assembled at the work site

**For Your Safety:**

- All overhead brackets, whether wall-mounted or panel-mounted, include anti-dislodgement features to prevent the unit from dislodging when pushed or struck from below
- It is exclusively the responsibility of the installer to ensure that panels and wall-mounted brackets are properly and safely anchored
- Shelf weight restrictions are as follows:
  - 24" overhead: 60 lbs
  - 30" overhead: 75 lbs
  - 35" overhead: 80 lbs
  - 36" overhead: 90 lbs
  - 42" overhead: 105 lbs
  - 45" overhead: 110 lbs
  - 48" overhead: 120 lbs
  - 54" overhead: 130 lbs
  - 60" overhead: 150 lbs

**Lock System:**

- Overhead cabinets include randomly-assigned UM Series locks (#226-425). Black-faced, master-keyed, and core-removable
- Locks may be keyed-alike in the field
- Other key series are available, including Haworth SL, bright nickel LL, and Knoll K. Please see page 9 for details

**Systems Compatibility:**

- GO overhead cabinets and shelves may be installed on one of 8 different manufacturer's panel systems:
  - M - HM Action Office
  - E - HM Ethospace
  - S - SC 9000
  - A - SC Avenir
  - H - HW Unigroup
  - H - HW Places (same bracket as HW Unigroup)
  - P - HW Premise (not available for inside-stowing overheads)
  - D - Knoll Dividends (not available for inside-stowing overheads)

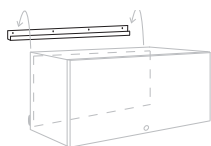
**Options and Accessories:**

- LED and florescent task lights for under-shelf installation
- 1 1/4" overhead back stop (for any cabinet or shelf)
- Magnetic shelf divider

How To Order:

Product #	Product #	First "?" (metal color)
OGO (Wall Mounted, OTT)	4230 J (42" wide)	668 (GO Black)

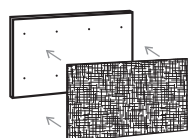
Wall-Mounted Overhead - Horizontal Bracket Over-the-Top Stowing Door



- Single bracket mounts horizontally on wall, anchored to wall studs
- Cabinet includes over-the-top stowing door. For cabinet specifications see the O.T.T. overhead on page 62
- Includes cabinet, horizontal bracket, and fasteners

H	D	W	Product #	Pkg Wt	Pkg Cube	Price
15	13 3/4	24	OGO 2430 J ?	29 lb	2.1 ft	\$454
15	13 3/4	30	OGO 3030 J ?	33 lb	2.1 ft	\$459
15	13 3/4	36	OGO 3630 J ?	36 lb	2.1 ft	\$497
15	13 3/4	42	OGO 4230 J ?	41 lb	2.6 ft	\$513
15	13 3/4	48	OGO 4830 J ?	45 lb	2.6 ft	\$556
15	13 3/4	54	OGO 5430 J ?	50 lb	3.2 ft	\$616
15	13 3/4	60	OGO 6030 J ?	56 lb	3.2 ft	\$653

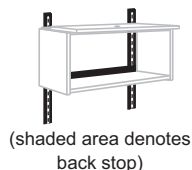
Wall-Mounted Tack Board - Horizontal Bracket



- Tack board sits inside metal back panel, similar to desk hutch tack board
- Metal back panel attaches to wall studs
- Includes metal back panel, tack board, and fasteners
- Specify metal color and fabric

H	D	W	Product #	Pkg Wt	Pkg Cube	Price
20	1	24	TBM24 ??	10 lb	.8 ft	\$302
20	1	30	TBM30 ??	12 lb	.8 ft	\$335
20	1	36	TBM36 ??	13 lb	.9 ft	\$373
20	1	42	TBM42 ??	14 lb	.9 ft	\$394
20	1	48	TBM48 ??	14 lb	1.0 ft	\$432
20	1	54	TBM54 ??	15 lb	1.0 ft	\$470
20	1	60	TBM60 ??	15 lb	1.2 ft	\$502

Vertical Brackets for Wall-Mounting



- An alternate method for mounting overhead cabinets with over-the-top stowing door or shelves
- Brackets are 60" tall, double-slotted to hold two cabinets side-by-side
- Brackets include aluminum shell with black steel hanger insert
- 20 toggle locks and fasteners included for each set of brackets
- When fully assembled and hung, cabinets and shelves rest approximately 1 1/2" away from the wall
- 1 1/4" tall back stop is recommended (see page 63)
- Vertical brackets are mounted 1/2" to each side of the overheads to allow for positioning units side-by-side, if desired
- When installing overhead cabinet or shelves, order the M-HM Action Office brackets

Description	Product #	Price
One pair vertical brackets, sold separately	WMT 0088	\$386



Do not stack overheads!

**NOTICE:**  
It is exclusively the responsibility of the installer to ensure that wall-mounted brackets are properly and safely anchored to the wall. Weight restrictions do apply. Great Openings holds no responsibility or liability for improper or unsafe installation of wall-mounted brackets.

Wall-Mounted Tack Board - Vertical Brackets



- Tack board hangs on vertical wall mount brackets described above
- These tack boards are not interchangeable with desk hutch tack boards
- Please specify tack board fabric

H	W	Product #	Price
18	30	TB 3018 K ?	\$268
18	36	TB 3618 K ?	\$280
18	42	TB 4218 K ?	\$292
18	48	TB 4818 K ?	\$316
18	60	TB 6018 K ?	\$329

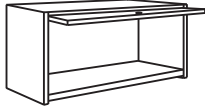
? **Ordering COM Fabric?**  
See page 8

## SIN 711-3

How To Order:

Product #	Product #	First "?" (metal color)	Second "?" (bracket type)
<b>IGO</b> (Overhead Cab, Inside Stow. Door)	<b>2430</b> (24"w)	<b>571</b> (Vanadium)	<b>E</b> (HM Ethospace)

### Panel-Supported Overhead Inside Stowing Door



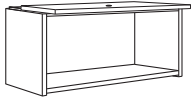
- Inside clear height is 12 1/2"
- Add a satin nickel loop pull to the cabinet door by adding the suffix "L" to the product numbers. Also add \$10 to the list price for each cabinet
- Top, sides, and shelf are 18 gauge, door is 20 gauge

Specify bracket type as a suffix to the product number:

M - HM Action Office™	E - HM Ethospace™
S - SC S9000™	A - SC Avenir™
H - HW Unigroup™	H - HW Places™

H	D	W	Product #	Pkg Wt	Pkg Cube	Price
16 1/2	14 1/8	24	IGO 2430 ??	31 lb	2.9 ft	\$545
16 1/2	14 1/8	30	IGO 3030 ??	35 lb	2.9 ft	\$564
16 1/2	14 1/8	35	IGO 3530 ??	36 lb	2.9 ft	\$578
16 1/2	14 1/8	36	IGO 3630 ??	39 lb	2.9 ft	\$591
16 1/2	14 1/8	42	IGO 4230 ??	44 lb	3.9 ft	\$620
16 1/2	14 1/8	45	IGO 4530 ??	45 lb	3.8 ft	\$631
16 1/2	14 1/8	48	IGO 4830 ??	49 lb	3.8 ft	\$640
16 1/2	14 1/8	54	IGO 5430 ??	52 lb	4.7 ft	\$773
16 1/2	14 1/8	60	IGO 6030 ??	61 lb	4.7 ft	\$820

### Panel-Supported Overhead Over-the-Top Stowing Door



- Inside clear height is 12 1/2"
- Add a satin nickel loop pull to the cabinet door by adding the suffix "L" to the product numbers. Also add \$10 to the list price for each cabinet
- Top, sides, and shelf are 18 gauge, door is 20 gauge
- This cabinet may be installed using the vertical wall mounted brackets shown on page 61(Use M-HM Action Office brackets)

Specify bracket type as a suffix to the product number: Overhead shelf load capacities:

M - HM Action Office™	E - HM Ethospace™
S - SC S9000™	A - SC Avenir™
H - HW Unigroup™	H - HW Places™
D - Knoll Dividends™	P - Premise™

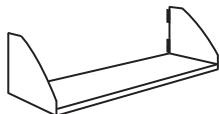
24" overhead: 60 lbs  
 30" overhead: 75 lbs  
 35" overhead: 80 lbs  
 36" overhead: 90 lbs  
 42" overhead: 105 lbs  
 45" overhead: 110 lbs  
 48" overhead: 120 lbs  
 54" overhead: 130 lbs  
 60" overhead: 150 lbs

H	D	W	Product #	Pkg Wt	Pkg Cube	Price
15	13 1/4	24	OGO 2430 ??	27 lb	2.1 ft	\$462
15	13 1/4	30	OGO 3030 ??	31 lb	2.1 ft	\$478
15	13 1/4	35	OGO 3530 ??	32 lb	2.1 ft	\$489
15	13 1/4	36	OGO 3630 ??	34 lb	2.1 ft	\$501
15	13 1/4	42	OGO 4230 ??	39 lb	2.6 ft	\$526
15	13 1/4	45	OGO 4530 ??	41 lb	2.6 ft	\$534
15	13 1/4	48	OGO 4830 ??	43 lb	2.6 ft	\$542
15	13 1/4	54	OGO 5430 ??	48 lb	3.2 ft	\$656
15	13 1/4	60	OGO 6030 ??	54 lb	3.2 ft	\$696

How  
To Order:

Product #	Product #	First "?" (metal color)	Second "?" (bracket type)
<b>OGO</b> (Overhead Shelf)	<b>2420</b> (24"w, full height)	<b>571</b> (Vanadium)	<b>P</b> (Premise)

Full-Height Overhead Shelf



- May hang on panel (see bracket options below), or on vertical wall mount brackets listed on page 61 (Use M-HM Action Office brackets)
- Shelf sides are 16 gauge, shelf is 18 gauge

Specify bracket type as a suffix to the product number:

M - HM Action Office™	E - HM Ethospace™
S - SC S9000™	A - SC Avenir™
H - HW Unigroup™	H - HW Places™
D - Knoll Dividends™	P - Premise™

H	D	W	Product #	Pkg Wt	Pkg Cube	Price
15	12 3/4	24	OGO 2420 ??	26 lb	2.1 ft	\$232
15	12 3/4	30	OGO 3020 ??	30 lb	2.1 ft	\$240
15	12 3/4	35	OGO 3520 ??	31 lb	2.1 ft	\$245
15	12 3/4	36	OGO 3620 ??	32 lb	2.1 ft	\$249
15	12 3/4	42	OGO 4220 ??	34 lb	2.6 ft	\$258
15	12 3/4	45	OGO 4520 ??	36 lb	2.6 ft	\$266
15	12 3/4	48	OGO 4820 ??	38 lb	2.6 ft	\$271
15	12 3/4	54	OGO 5420 ??	42 lb	3.2 ft	\$303
15	12 3/4	60	OGO 6020 ??	44 lb	3.2 ft	\$314

Half-Height Overhead Shelf



- May hang on panel (see bracket options below), or on vertical wall mount brackets listed on page 61 (Use M-HM Action Office brackets)
- Shelf sides are 16 gauge, shelf is 18 gauge

Specify bracket type as a suffix to the product number:

M - HM Action Office™	E - HM Ethospace™
S - SC S9000™	A - SC Avenir™
H - HW Unigroup™	H - HW Places™
D - Knoll Dividends™	P - Premise™

H	D	W	Product #	Pkg Wt	Pkg Cube	Price
7	12 3/4	24	OGO 2410 ??	24 lb	2.1 ft	\$210
7	12 3/4	30	OGO 3010 ??	27 lb	2.1 ft	\$216
7	12 3/4	35	OGO 3510 ??	28 lb	2.1 ft	\$221
7	12 3/4	36	OGO 3610 ??	29 lb	2.1 ft	\$225
7	12 3/4	42	OGO 4210 ??	32 lb	2.6 ft	\$232
7	12 3/4	45	OGO 4510 ??	34 lb	2.6 ft	\$239
7	12 3/4	48	OGO 4810 ??	35 lb	2.6 ft	\$244
7	12 3/4	54	OGO 5410 ??	39 lb	3.2 ft	\$273
7	12 3/4	60	OGO 6010 ??	41 lb	3.2 ft	\$281

Overhead Back Stop  
(For any Overhead Cabinet or Shelf)

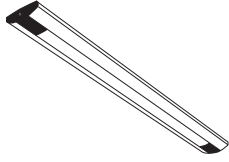


(shaded area denotes back stop)

- 1 1/4" tall metal back stop
- Order as specified at right for any size or type of overhead cabinet or shelf. The back stop price will be added to the standard overhead price

Product #	Price
Add a "B" as a suffix to the product number for any size or type overhead.	\$67

## LED Linear Task Light



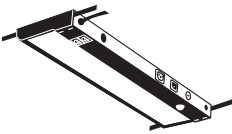
- 30" black female-male power cord
- 3500K color temperature
- Metal trough reflector with diffuser lens
- Magnetic or screw mounting options
- Clear anodized aluminum with flint color end caps, UL/CUL listed
- 3 year warranty on fixture. 1 year warranty on power supply

H	D	W	LED's	For Use On	Product #	Pkg Wt	Pkg Cube	Price
5/8	2	18 3/8	6	24" to 36" shelves	LD618	4 lb	2 ft	\$448
5/8	2	18 3/8	9	24" to 36" shelves	LD918	4 lb	2 ft	\$522
5/8	2	36 1/2	12	42" to 72" shelves	LD1236	10 lb	3 ft	\$720
5/8	2	36 1/2	18	42" to 72" shelves	LD1836	10 lb	3 ft	\$879

### LED Green Advantages:

- Solid state technology eliminates the need for Chicago Code (fused plugs)
- Low energy consumption, No UV emissions, no flickering
- No disposal hazards - no mercury, lead, or gases
- Long life @ 50,000 hours eliminating re-lamp and maintenance time
- Allows for low profile, light weight, fixture designs

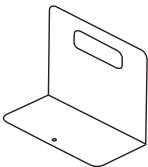
## Fluorescent Task Light



- Task light snaps in place beneath the hutch shelf with spring clips
- A 3 1/2" wide lens opening provides maximum light output
- Features a T8 Tri-phosphor 3500K fluorescent lamp and thermally protected class "P" rapid start NPF magnetic ballast with a class A sound rating included
- Includes a 9' black SJT cord

H	D	W	For Use On	Product #	Pkg Wt	Pkg Cube	Price
1 1/2	6 7/8	18 1/3	36" hutch	VT 18-B K	6 lb	3.1 ft	\$207
1 1/2	6 7/8	36 1/3	48", 54" hutch	VT 36-B K	12 lb	6.8 ft	\$354
1 1/2	6 7/8	48 1/3	60", 66", 72" hutch	VT 48-B K	10 lb	5.2 ft	\$407

## Magnetic Shelf Divider



- Black divider is 7 1/2" tall, 8" wide
- 4" wide base includes 8" x 3" magnet
- Sold in packages of three dividers

H	D	W	Product #	Description	Pkg Wt	Pkg Cube	Price
8	3	7 1/2	LFM 300 30	(package of 3)	4.0 lb	2 ft	\$64